

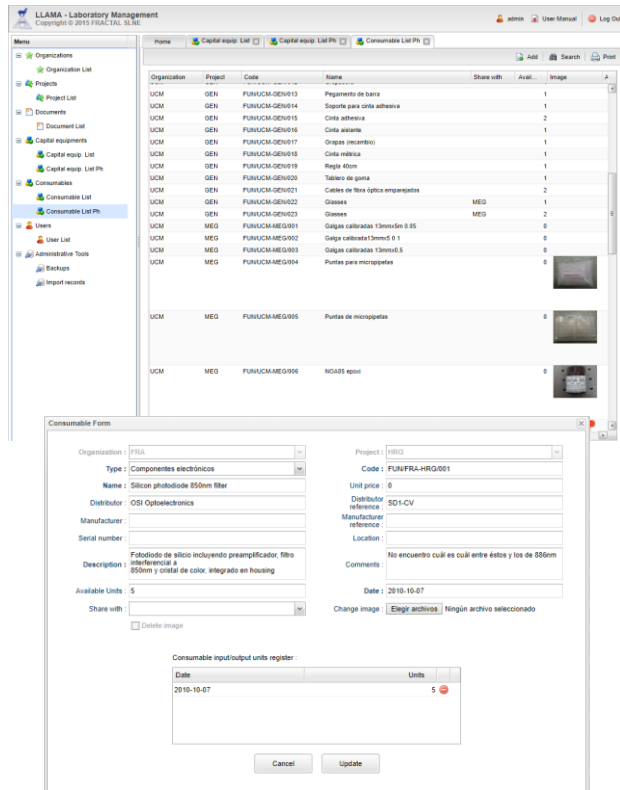
LLAMA FUNCTIONALITY

LLAMA facilitates the following tasks:

1. Asset management

LLAMA allows to manage the information provided for the capital equipment and consumables. In particular,

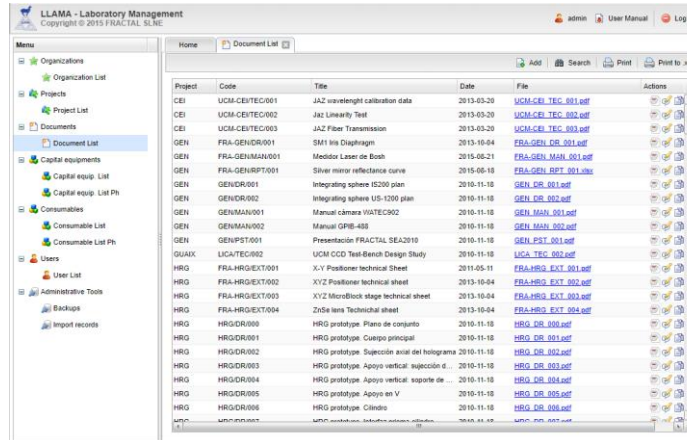
- ❖ Identify capital equipment and consumables
- ❖ Add and manage elements information (price, supplier, etc.)
- ❖ Facilitate access to the elements in the tool and to locate them at the laboratory
- ❖ Control using (input/output) of consumables in the laboratory



2. Documentation archive

Documents related to the elements registered in the application, such as manuals or datasheets, can be also kept in LLAMA.

LLAMA facilitates the remote access to these documents and allows to have an electronic copy of them.



3. Management of organizations, projects and user rights

The capital equipment and consumables, as well as their associated documents, are always registered in LLAMA associated to an organization and to the implied projects.

LLAMA allows registering and managing new organizations and projects. In particular, the application allows to define what users can access to the different elements and documents and the actions that can perform on them (create new elements, modify the information, add inputs/outputs of consumables or just visualize the information)

4. System administration

LLAMA also provides the following capabilities.

User administration:

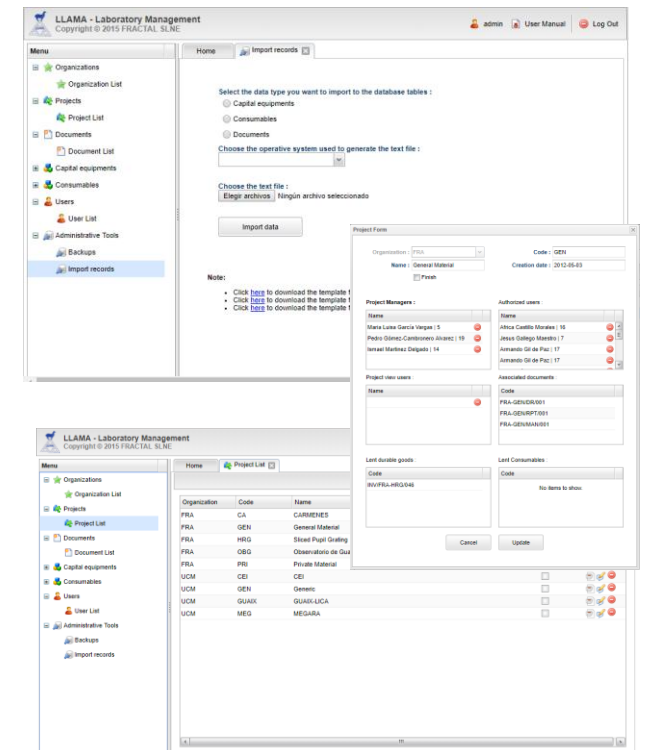
- ❖ Create new users
- ❖ Modify existing user properties
- ❖ Unsubscribe users

Tools:

- ❖ Import capital equipment, consumables or documents from an external database.

Database administration:

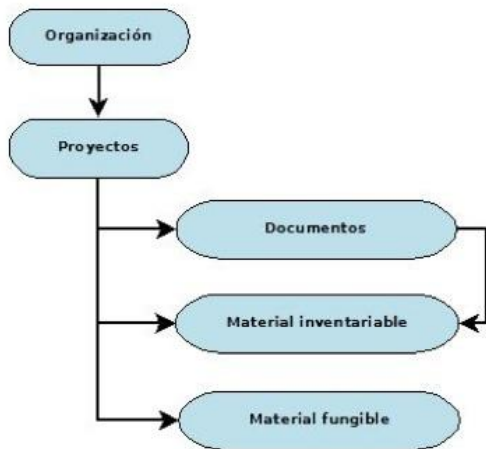
- ❖ Data backups: Database, Documents and Web application
- ❖ Data restore: Users, Database, Documents and Web application



LLAMA OVERVIEW

LLAMA, our **Laboratory Management Tool**, is a web-based tool intended for managing all items that are kept in a laboratory.

LLAMA allows to store, classify and manage all the documents, capital equipment and consumables in the laboratory of an organization. **LLAMA** allows also to create and manage users and projects. Access rights can be assigned for the different users to define the actions that can be performed and the elements that can be visualized by each user.



LLAMA uses a public relational database and provides a graphical user interface based on web forms. Anyone with access to the Internet and an account in the system with the suitable permissions may access the project's documentation.

No need for any specific software installed on your client computers, just a web browser is enough!

Why is LLAMA needed?

Software tools help managing the big amount of information generated during the lifetime of any project. This is particularly important for geographically distributed organizations, where it becomes essential to keep the project's information in an electronic format, well organized and easily accessible to all people involved.

This is particularly important for facilitating the work performed in a laboratory, where, as a lot of equipment and consumables are managed, having a good control of the stock becomes critical to guarantee elements availability.

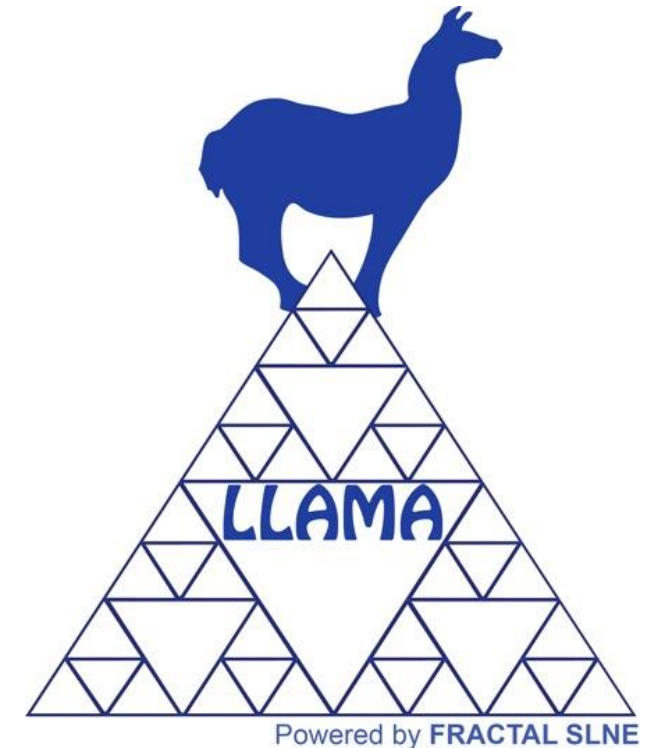
LLAMA is part of the **FRACTAL System & Project Suite**, which includes also the following applications:

1. **GECO** (Configuration Control)
2. **DOCMA** (Documentation Management)
3. **MANATEE** (Project Management)

All applications can be used independently or in an integrated way.

A trial license or more information about these tools can be found at:

<http://www.fractalslne.es/>
e-mail: info@fractal-es.com



Laboratory Management Tool